



 : www.kecrane.com

 : info@kecrane.com

 : +86 371-85908747

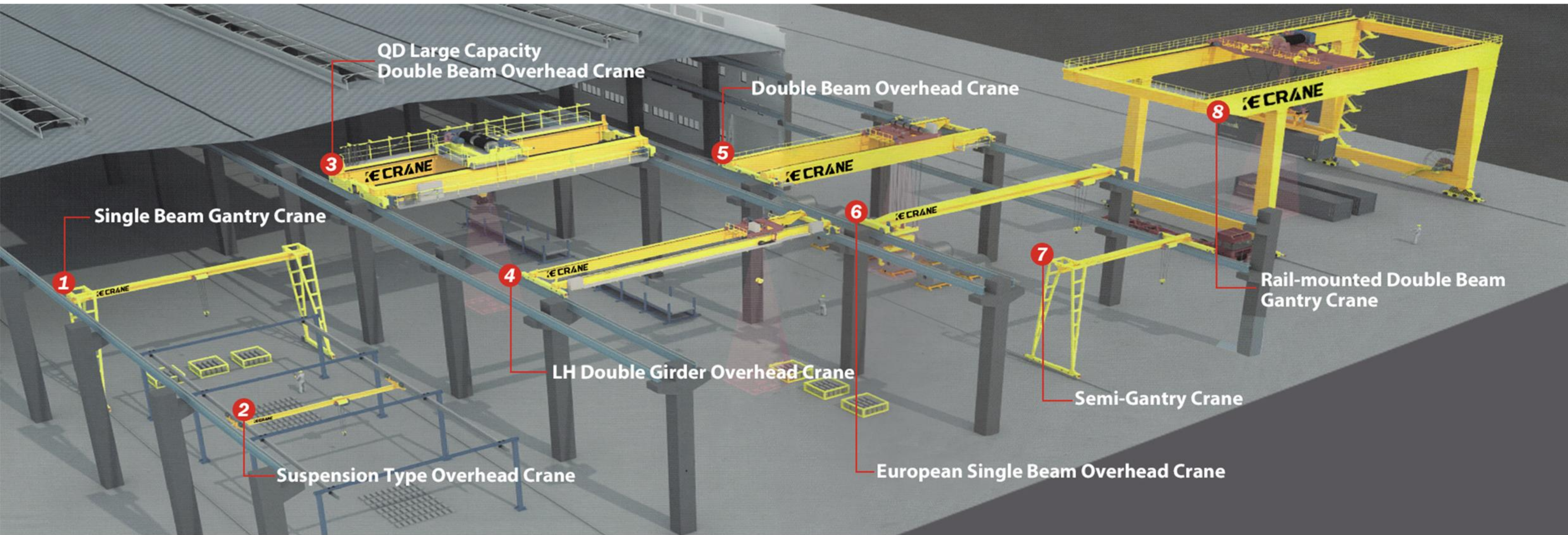
 : Zhengzhou, Henan Province



HENAN KE CRANE CO., LTD

Crane Product
Application Introduction

KE CRANE



COMPANY PROFILE

KE Crane is a professional crane manufacturer integrating R&D, manufacturing, sales, installation and service. With a wide range of products and a global selection of raw materials, we are committed to providing custom designed material handling solutions for both standard and custom cranes.

We have served more than 6,000 customers in over 100 countries and territories worldwide. Industries served include over 50 key industry sectors such as aerospace, automotive and marine, steel smelting, petrochemical, electronics and information technology, power and water conservancy, and military rail, and our products have been operating effectively and safely. We promise to provide a 12-month warranty and permanent technical service support for all our products.

Our factory covers an area of 1.62 million square metres and has more than 4,500 employees, including more than 200 senior engineers and technicians. There are more than 20 production workshops with more than 3,500 sets of various advanced processing equipment and product test benches. We use globally selected raw materials to improve product quality to the maximum extent while reducing costs. We provide R&D, production, sales and services for more than 110 types of cranes and accessories such as gantry cranes, overhead cranes, electric hoists, lifting electromagnets and lifting grabs. We can provide total solutions and whole life cycle services for our customers and are committed to the intelligent, environmentally friendly and high quality development of the crane industry.

OUR FACTORY



QUALIFICATION CERTIFICATE



PRODUCT CATALOG

Overhead Bridge Crane

Double Beam Multilobe Grab Bridge Crane.....	1
LH Type Electric Hoist Bridge Crane.....	2
QD Type Double Girder Bridge Crane.....	3
HD European Electric Double Girder Bridge Crane.....	4
LB Type Explosion Proof Electric Girder Crane.....	5
LDA Type Electric Single Beam Crane.....	6
LDZ Type Single Beam Grab Crane.....	7
QZ Type Grab Bucket Bridge Crane.....	8
QC Type Electromagnet Bridge Crane.....	9

Gantry Crane

MH Type Electric Hoist Gantry Crane.....	10
L Type Electric Hoist Gantry Crane.....	11
BMH Type Semi Gantry Crane.....	12
A Type Double-beam Hook Gantry Crane.....	13
RMG Type Upper Rotation Rail-mounted Container Gantry Crane.....	14
MZ Type Double-beam Grab Gantry Crane.....	15
50~100t Winch Gantry Crane.....	16
U Type Subway Turn Slag Hook Gantry Crane.....	17
USmall Gantry Crane.....	18

Jib Crane

Fixed column jib Crane.....	19
Wall Mount Jib Crane.....	20

Lifting Electromagnet

MW5 Scrap Lifting Electromagnet.....	21
High Temperature Lifting Electromagnet.....	22
MW22 Lifting Electromagnet for Billet,Girder Billet and Slab.....	23
MW38 Lifting Electromagnet for Bundled Rebar and Profiled Steel.....	25
Lifting Magnet for Speed Wier(Coiled Bar).....	27
Lifting Electromagnet For Lifting and Transporting Steel.....	28

Lifting Electronmagnet for Turning and Side Hung.....	29
Electric Permangnet Lifter.....	30
Hydraulic Magnet Lift.....	31

Electric Hoist

Chain Hoist.....	33
Wire Rope Electric Hoist.....	34
HB Type Explosion Proof Electric Hoist.....	35
Metallurgical Electric Hoist.....	36
European Wire Rope Electric Hoist.....	37

Electric Grab

Hydraulic Muti-flap Grab.....	38
Four Rope Flap Grab.....	39
Single Rope Hanging Grab.....	40

Electric Transfer Cart

Electric Transfer Cart.....	41
-----------------------------	----

Winch

JK Electrically Controlled High-speed Winch.....	43
JKD Electrically Controlled High-speed Winch.....	44
JM Series Electric Controlled Slow Speed Winch.....	45
QPQ Hoist.....	46

OVERHEAD BRIDGE CRANE

Double Beam Multilobe Grab Bridge Crane

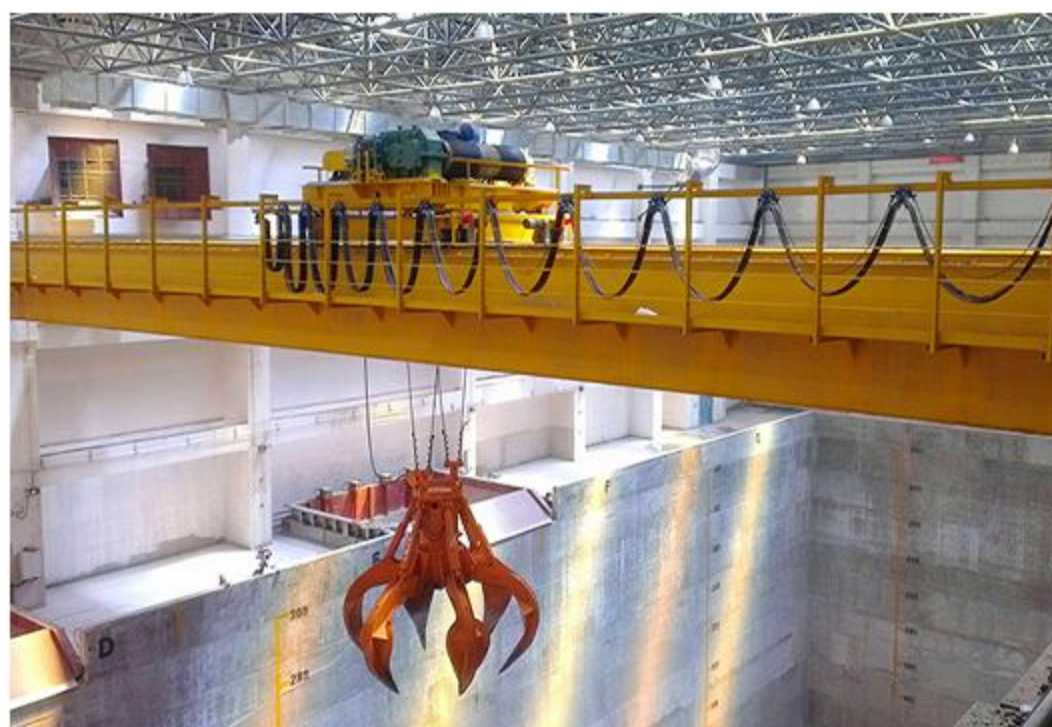


◆ Basic Parameter:

Rated load: 8T-12.5T
Lift height: 34m-36m
span: 19.5m-31.5m
Working class: A8
Power source: 380V 50hz 3P
or customized

Application:

Multi-petal (orange-petal) type: mainly used with single-hook cranes for grabbing domestic garbage, scrap steel and other materials, often used in environmental protection power plants, steel plants, etc.



LH Type Electric Hoist Bridge Crane



◆ Basic Parameter:

Capacity: 3T-20T
Lift height: 6m-18m
Span: 10.5m-31.5m
Working class: A3-A4
Power source: 380V 50hz 3P
or customized



LH type electric hoist double beam crane is traveling on fixed support, the frame adopts box-type welding mechanism, and it used together with CD1 or MD1 model wire rope electric hoist as a complete set, It is an mid-duty class crane, the capacity from 3 tons to 20 tons. The span is 10.5-31.5m. Working class is A3~A4. Working temperature is -20°to 45°centigrade.

This type crane is widely used in plants, warehouses, material stocks to lift goods. It is prohibited to use the equipment in the combustible, explosive to corrosives environment.

QD Type Double Girder Bridge Crane

◆ Basic Parameter:

Capacity: 5T-450T
Lift Height: 6m-33m
Span: 10.5m-31.5m
Working Class: A5-A6
Power source: 380V 50hz 3P
or customized



QD model Double Girder Overhead Crane is applied in open warehouse or rail sideways to conduct common loading unloading and material handling works. It is a heavy duty type overhead crane that satisfy frequently using. According to the different utilization class and load state, it is divided into A5 and A6 working classes.

This crane is composed of bridge, travelling mechanisms, trolley, electric equipment. The bridge frame adopts box welded structure, the crane travelling mechanism adopts separate drive with motor and speed reducer. All mechanism are controlled in driver's cabin. Power supply adopts cable festoon and sliding wire, select one when ordering.



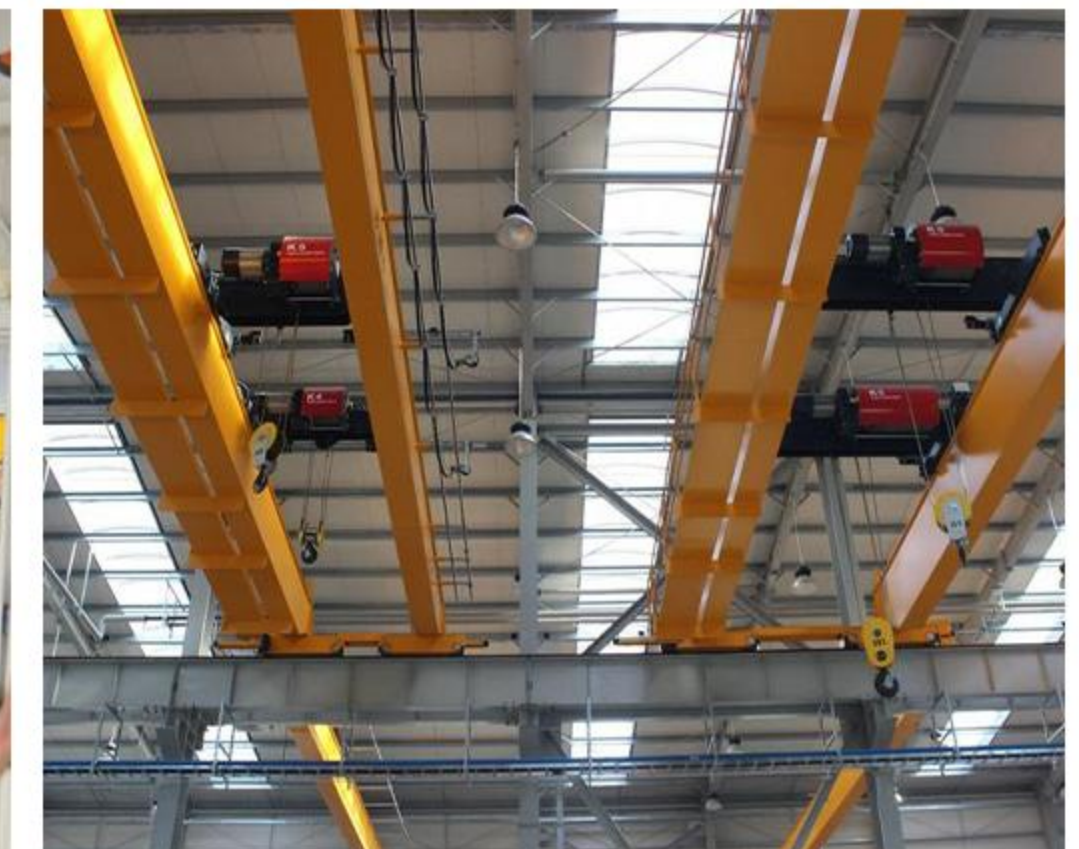
HD European Electric Double Girder Bridge Crane

◆ Basic Parameter:

Capacity: 5T-80T
Lift Height: 5m-22m
Lifting mechanism: European electric
double girder wire rope hoist
Span: 10.5m-31.5m
Working Class: A5
Power source: 380V 50hz 3P
or customized



The main beam employs bias-rail box-type structure and connects with end beam by high-strength bolt ensuring easy transportation. The professional processing ensures the connection accuracy of main end beam, making crane run steadily. As using new compact trolley and high-strength material, it has small overall dimension and light weight, compared with traditional crane, which can decrease the height of factory building and reduce the cost. widely used in indoor and outdoor industrial and mining enterprises, iron and steel chemical industry, railway transportation, port and wharf, logistics and other places.



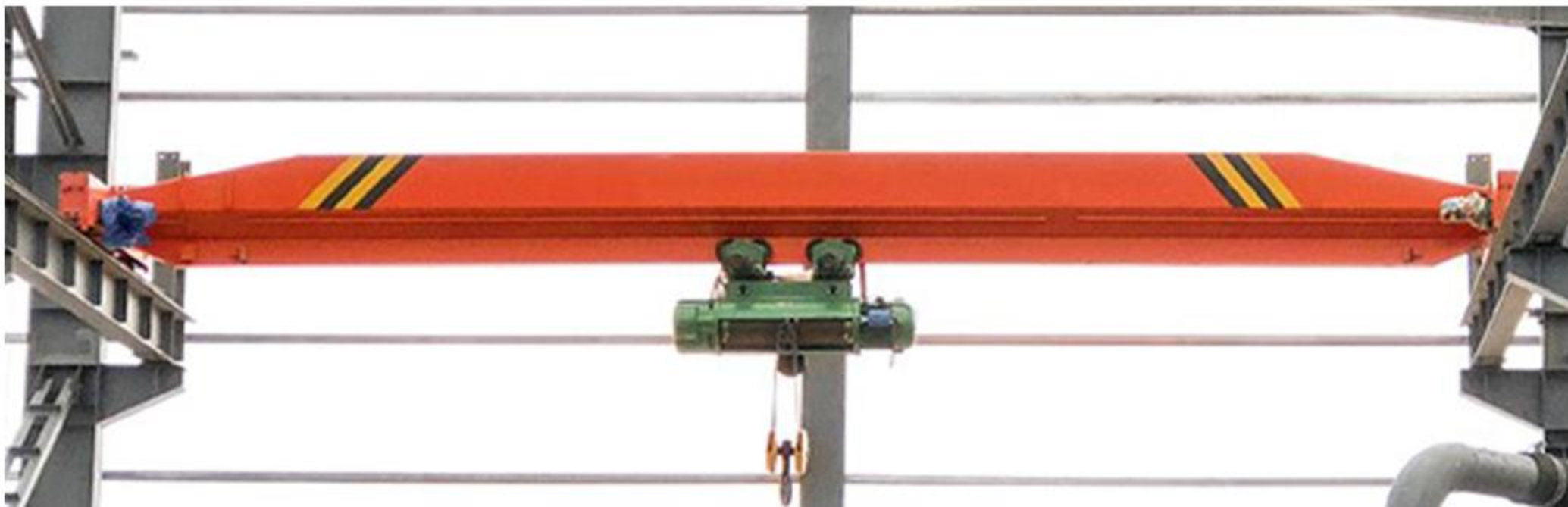
LB Type Explosion Proof Electric Girder Crane

◆ Basic Parameter:

Capacity: 1T-20T
 Lift height: 6m-24m
 Lifting mechanism: HB/BCD/
 BMD electric hoist(EX)
 Span: 7.5m-28.5m
 Working class: A3
 Power source: 380V 50hz 3P
 or customized
 Explosion proof grade:
 Exd II BT4/Exd II CT4



The explosion proof crane is a overhead crane with an explosion-proof electric hoist. It has mature and reliable technology, simple structure, small appearance, light weight, installation, use. The working environment temperature is -20~40 °C. The relative humidity should not exceed 50% when working indoors at 40°C, and the relative humidity can be as high as 100% when working outdoors at 25°C. The altitude of the installation site does not exceed 2000m. It is suitable for the maintenance and loading and unloading of mechanical workshops, warehouses, stock yards, and hydropower stations in light work systems.



LDA Type Electric Single Beam Crane

◆ Basic Parameter:

Capacity: 1T-20T
 Lift height: 6m-30m
 Lifting mechanism: CD/MD Wire
 rope hoist or electric chain hoist
 Span: 7.5m-32m
 Working class: A3
 Power source: 380V 50Hz 3P
 or customized



Applications:

Widely used in petroleum and petrochemical, railway construction, civil aviation airports, hydroelectric power stations, ports, paper making, building materials, metallurgy and other workshops.

LD type 1-20T Single Beam Overhead Crane has the characteristics of reasonable structure and strong rigidity. The whole machine is used together with CD type, MD type and HC type electric hoist. It is a kind of light and small-sized lifting machinery with lifting weight capacity 1t-20t, and span from 7.5m ~ 31.5m, the working grade is A3, and the working environment temperature is - 25°C to 40°C LD Type 1~20T Single Beam Overhead Crane widely used in plants, warehouse, material stocks to lift goods. It is prohibit to use in the combustible, explosive or corrosives environment.



LDZ Type Single Beam Grab Crane

◆ Basic Parameter:

Capacity: 3T-5T
Lift Height: 18m
Span: 7.5m-22.5m
Working Class: A4
Lifting mechanism: CD MD Model electric hoists
Power source: 380V 50hz 3P or customized

This product is widely used in loading goods in port, factory, workshop and power plant.

The gripping device is a double-drum four-rope grab with simple structure and reliable operation. The grab can be opened and closed at any height. It is only suitable for bulk materials in natural stacking conditions. If grabbing the materials under the water or special materials, they must be specialized when ordering.



QZ Type Grab Bucket Bridge Crane



QZ Type Grab Bridge crane is widely used in loading goods in port, factory, workshop and power plant. The work classification is heavy. The group classification of the crane is A6. The direction of platform door to the driver's cap is: side, end and top. The lifting capacity includes the weight of the grab. The gripping device is a double-drum four-rope grab with simple structure and reliable operation. The grab can be opened and closed at any height. It is only suitable for bulk materials in natural stacking conditions. If grabbing the materials under the water or special materials, they must be specialized when ordering.

◆ Basic Parameter:

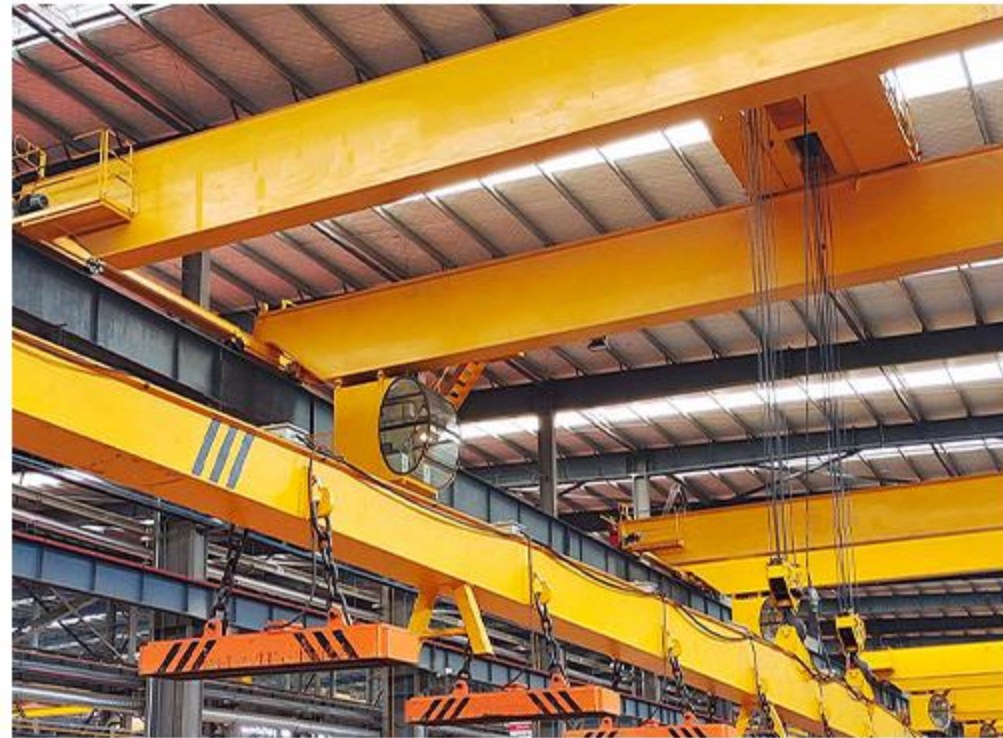
Capacity: 5T-20T
Lift Height: 18m-26m
Span: 10.5m-31.5m
Working class: A6
Power source: 380V 50hz 3P or customized



QC Type Electromagnet Bridge Crane

◆ Basic Parameter:

Capacity: 5T-16T
 Lift Height: 16m
 Span: 10.5m-31.5m
 Working Class:A6
 Power source: 380V 50hz 3P
 or customized
 Electromagnet Diameter:776-1180mm



The crane is mainly equipped with electromagnet, When the current is turned on, the electromagnet will firmly attract the steel objects and lift them to the designated place. Cut off the current, the magnetism disappeared, and the steel object was put down. The crane is suitable for scrap recycling plants and steel mills.



GANTYR CRANE

MH Type Electric Hoist Gantry Crane

◆ Basic Parameter:

Capacity: 5T-20T
 Lift Height:6m,9m,12m
 Span: 12m-30m
 Working Class:A3
 Power source: 380V 50hz 3P
 or customized



Applications:

Construction sites, factory, workshop, warehouse, power station, outdoor storage yards, logistic, etc.

MH type electric hoist gantry crane is used together with CD MD model electric hoists. It is a track traveling small and medium-sized cranes. Its proper lifting weight is 5 to 20 tons. The proper span is 12 to 30 meters, its proper working temperature is -20°C to 40°C.

This product is a regular crane widely used at open ground and warehouses to load, unload or grab materials. It has two controlling methods, ground controlling and room controlling.



L Type Electric Hoist Gantry Crane

◆ Basic Parameter:

Capacity: 5T-50T
Lift height: 6m, 9m, 12m
Span: 16m-28m
Working Class: A3-A5
Power source: 380V 50hz 3P
or customized



Applications:

Factory, workshop, warehouse, power station, logistic.

L Type electric hoist gantry crane match with CD1/ MD1, HC type Electric Wire rope hoist, to lifting and transporting the heavy materials, mainly use indoors and outdoors. In order to expand the scope of the crane operation, the main girder can extend to one side or both sides to extend the leg to form a cantilever. It is also possible to extend the operation scope of the crane by lifting and lifting the boom with the boom.

BMH Type Semi Gantry Crane

◆ Basic Parameter:

Capacity: 5T/10T
Lift height: 6m-18m
Span: 9.5m-24m
Working Class: A5
Power source: 380V 50hz 3P
or customized



Semi-gantry Crane has a special design structure to suit various crane work situations. It can be single girder and double girder, the two ends connections are different, one side is connected and supported by the crane gantry leg travel on the ground mounted rails, another side is connected and supported by an end carriage travel on the overhead track.

Compare to the standard gantry crane, it will save one side support gantry leg, not only reduce the cost, but also can expand crane effective workspace in some limited workshops.

The crane is suitable for indoor and outdoor use, under the lifting hook, there are different lifting tools to choose, such as grab bucket, electromagnet and other lifting tools.



A Type Double-beam Hook Gantry Crane

◆ Basic Parameter:

Capacity: 5T-160T
Lift Height: Customized
Span: 18m-35m
Working class: A5
Power source: 380V 50hz 3P
or customized



Applications:

It is suitable for open warehouse, yard, railway freight station, port dock cargo area, such as loading and unloading and lifting. And also be matched with a variety of spreaders for some special work.

A-type Double Beam Hook Gantry Crane, consists of A-type gantry frame steel structure, trolley, crane traveling mechanism, electrical system and other main components. This series gantry crane widely used for handling and lifting materials in open storage, stock ground, railway freight station, ports and so on. It can also carry out some special operations by equipped with various special lifting tools. Such as lifting electromagnet, grab bucket, hydraulic grab etc.



RMG Type Upper Rotation Rail-mounted Container Gantry Crane

◆ Basic Parameter:

Rated load: 16T-17T
Lift height: Max 16.5m
span: 17250m
Working class: M6
Power source: 380V 50hz 3P
or customized



U type subway turn slag gantry cranes are increasingly used in subway tunnel construction. The effective use of large-tonnage metro construction gantry cranes will directly affect the construction safety, progress, and quality of subway tunnel construction projects, and then affect To the economic and social benefits of the project. This type of crane is mainly responsible for the construction of subway tunnels and lifts the muck excavated by the shield tunneling machine to the ground.



MZ Type Double-beam Grab Gantry Crane



◆ Basic Parameter:

Capacity: 5t,10t
Span: 18~35m
Lifting Height: 10m
Working Class: A5
Power Supply: 380V 50Hz or Customized

Applications:

It is suitable for open warehouse, yard, railway freight station, port dock cargo area, such as loading and unloading and lifting. And also be matched with a variety of spreaders for some special work. Double-beam Grab Gantry Crane can be equipped with grab spreaders in order to meet the requirements of grabbing different materials. According to the requirements, different materials need to be equipped with a different grab. For example, the need to grab coal can be equipped with a wireless remote control grab to grab scrap metal. Garbage, etc. can be equipped with a hydraulic six-flap grab, grab wood can be equipped with a wood grab, and so on.

50~100t Winch Gantry Crane

◆ Basic Parameter:

Capacity: 50T/10T~100T/10T
Lift height: Main hook Max 16m,
Aux hook max 18m
Span: 28m, 38m
Working Class: A5
Power source: 380V 50hz 3P
or customized



Application:

Winch Gantry Crane are used in open warehouses, windy areas, material stocks area, bridge building, concrete industry, cement plant, granite industry, construction industry, engineering industry, port, transportation, construction, dockyard, and other building sites for lifting and loading unloading objects; The girder adopts double-piece steel truss structure, welded by U-steel with light weight, low cost, high wind-resistance and convenient assembly and disassembly. The hoisting mechanism is electric winch with simply structure, light self-weight and large load. There is a rain cover on the top of the electric winch. An electric hoist can be installed under the gantry crane main girder to lift other small weight object.



U Type Subway Turn Slag Hook Gantry Crane



◆ Basic Parameter:

Capacity: 5T-50/10T
 Lift Height: 10m-12m
 Span: 18m-35m
 Working Class: A5
 Power source: 380V 50hz 3P
 or customized

U Type Double Girder Gantry Crane is applied to general materials handling service in outdoor freight yard or along railway lines, such as loading, unloading, lifting and transferring work.

As there is more space under legs of gantry crane, it's fit for conveying larger products.



Small Gantry Crane

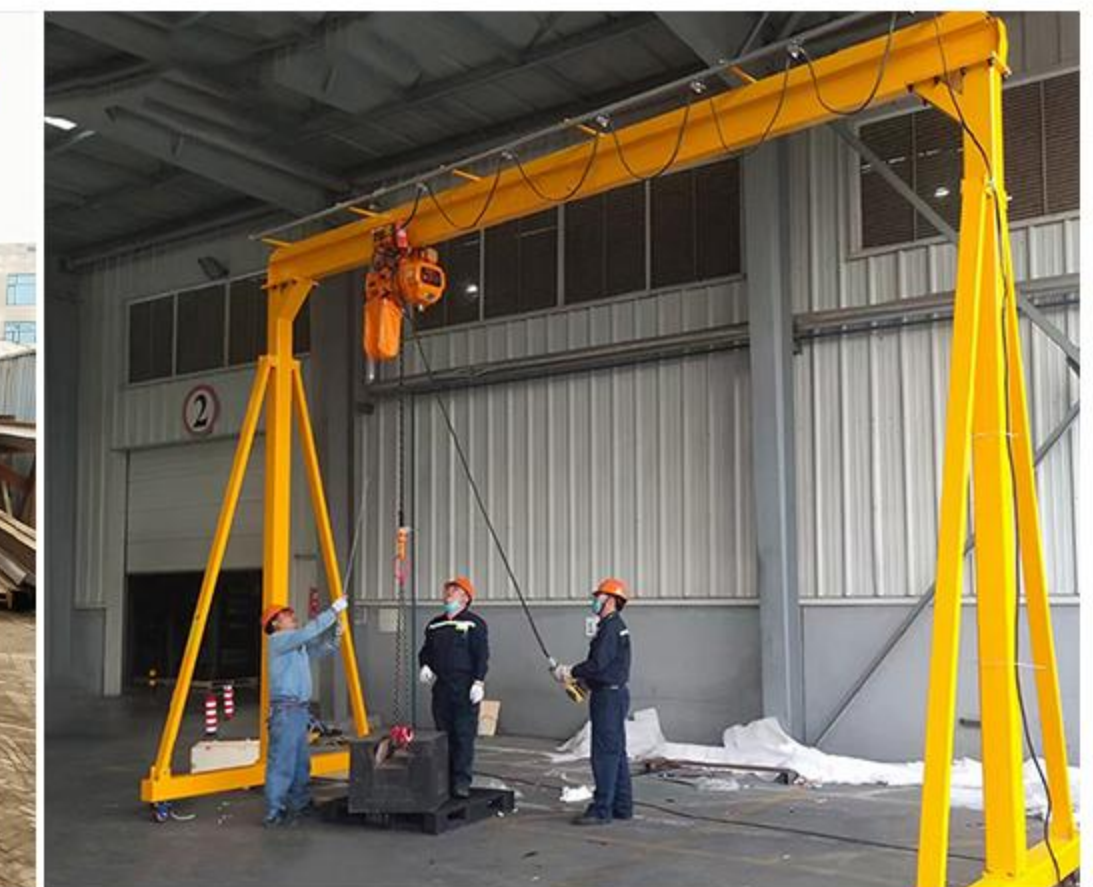
◆ Basic Parameter:

Capacity: 0.5T~10T
 Span: as per demands
 Lifting height: as per demands
 Working class: A3
 Power source: 380V 50Hz
 or customized



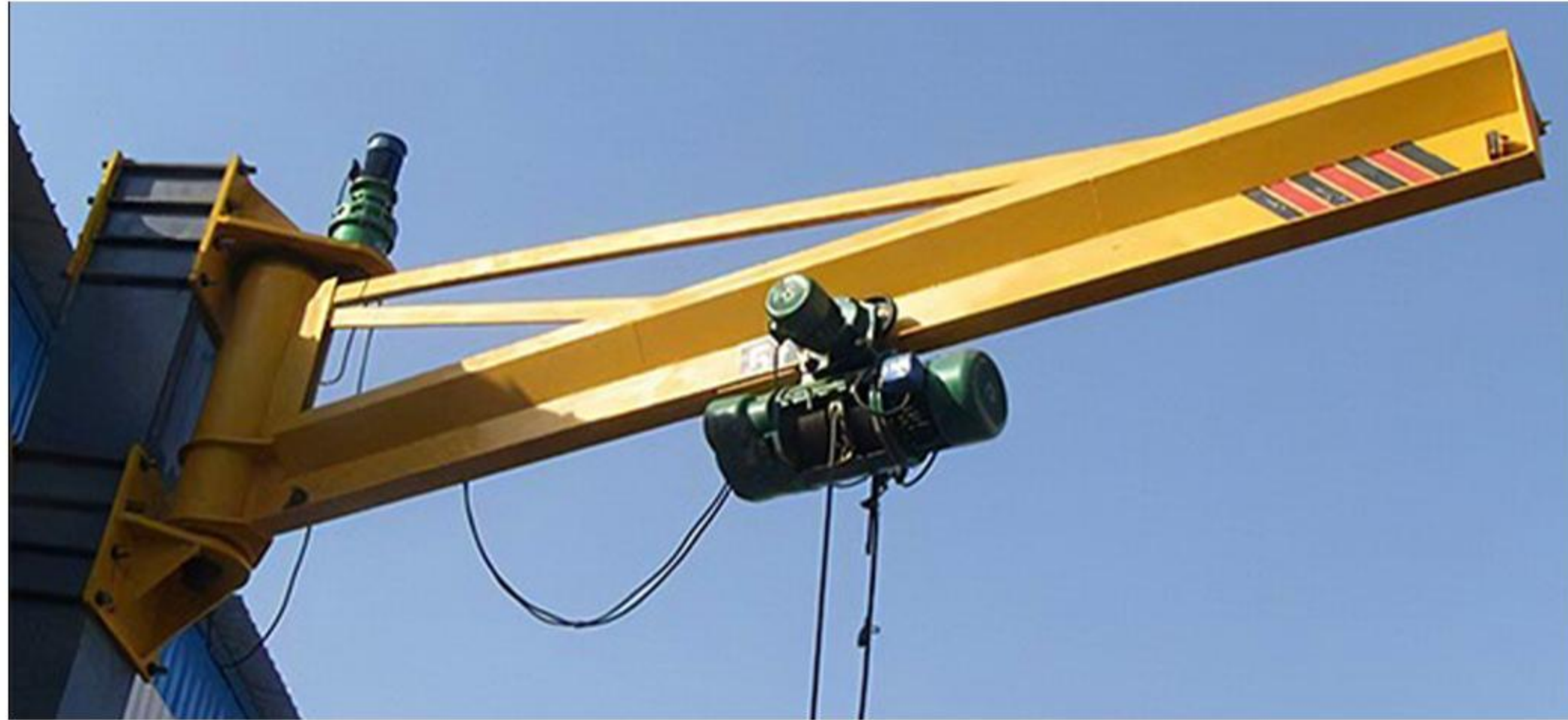
Small gantry crane is manufactured for lifting equipment, loading and unloading of the warehouse, maintaining equipment, and transporting materials, applicable for the small and medium factories.

The brake-bearing universal wheel can move on the ground, and be used together with an electric hoist, chain block, or monorail trolley, realizing crane mechanization, which can reduce the human power, and production costs, and improve work efficiency.



JIB CRANE

Wall Mount Jib Crane



◆ Basic Parameter:

Capacity: 0.25T-5T
Radius: 2m-6m
Rotation: 180 degree
Power source: 380V 50hz 3P
or customized

This type of wall mounted jib crane provides 0-180 degrees of rotation and can be easily mounted on any substantial steel structure building column at any desired height. The crane has the advantages of high efficiency, energy saving, labor saving, less space occupation, convenient operation and maintenance, etc. It is widely used in warehouses, assembly lines, mechanical maintenance workshops, etc



Fixed column jib crane



◆ Basic Parameter:

Capacity: 0.25T-5T
Lift height: 3m-8m
Span: 3m-7m
Power source: 380V 50Hz 3P
or customized



Applications:

Manufacturing workshop, metallurgy, petroleum, petrochemicals, ports, railway, civil aviation, power station, food industry, paper making, building material, warehouses and other material handling application.

This kind of floor mounted jib crane normally works with electric wire rope hoist or electric chain hoist, which consists of fixed column, rotating arm, rotation drive mechanism and electric hoist. The column is fixed on the concrete foundation by anchor bolt. The motor drives the driving mechanism to make the cantilever rotate. Electric hoist travelling on the jib beam .

It belongs to Light & Middle working class, with lifting load 0.25t, 0.5t, 1t, 2t, 3t, 5t, larger capacity can custom made. The rotation angle 360° which can meet different kind of using environment

LIFTING ELECTROMAGNET

MW5 Scrap Lifting Electromagnet

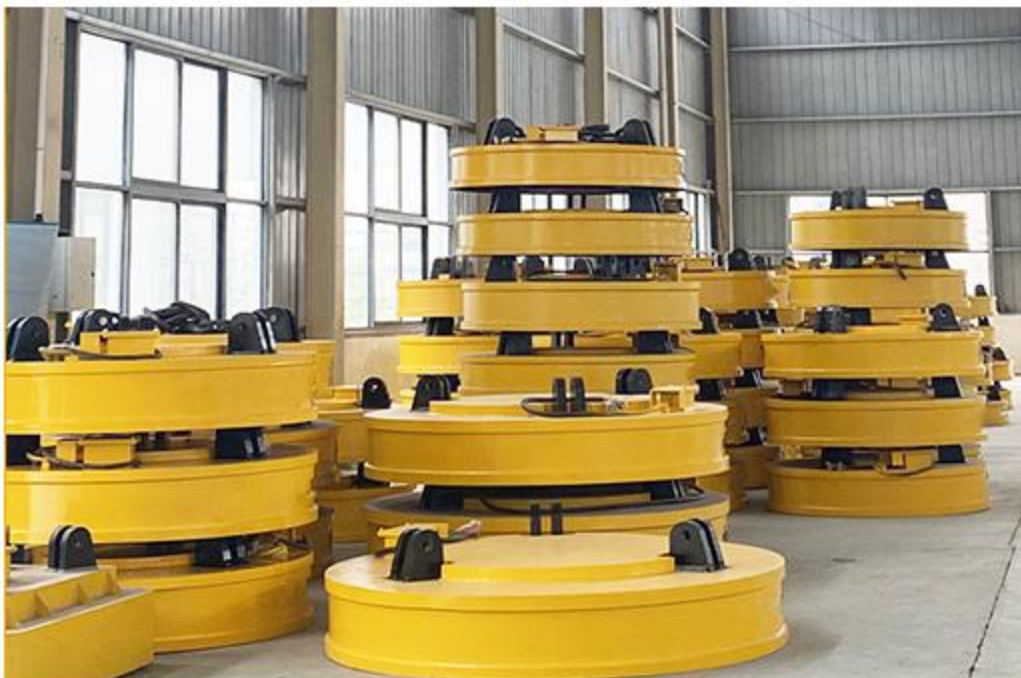


◆ Basic Parameter:

Rated voltage: DC-220V Duty Cycle: TD-75% Model: MW5
 Max. temperature can reach to 700-800°C
 Matching Equipment: Overhead crane, gantry crane, excavator, etc
 Handling Material: Metal scraps, steel billets, steel plate, wire rods, etc

Used in different industrial areas, such as steel making, foundry, mining, machinery, transportation and other industries.

MW5 series electromagnet suitable for cast ingot, steel ball, machine chip, for various kinds of steel scraps, return scrape, cropping, baling scraps and etc in foundry factories and for iron powder in coal washery, during slag disposal process, it can remove large size of iron at initial step. Outlet box has two chambers, an extra-thick fender and an anti-twist setting. There are the excitation options; rated voltage DC220V; strong excitation; over excitation.



High Temperature Lifting Electromagnet

Used in industries such as metallurgy, mining, machinery, and transportation for lifting ferromagnetic materials such as steel.

Choose normal or high or super-high temperature type according to the material's temperature. If below 150°C choose normal type, between 150°C and 600°C high type; above 600°C but with a limit under 700°C, super-high type.

Super-high temperature lifting electromagnet type can be supplied with cooling equipment, that is: after several times of lifting hot billet, the attraction force would reduce obviously, then you should place the electromagnet into cold water pool for some seconds, after that put it into operation again, we call it as high temperature diving electromagnet. Owing to some special process technics and smart heat dispersion structure, welding will never get split and the coil will always be waterproof.

◆ Basic Parameter:

Rated voltage: DC-220V
 Duty Cycle: TD-60%
 Max. temperature can reach to 700-800°C
 Matching Equipment: Overhead crane, gantry crane, excavator, etc
 Handling Material: Metal scraps, steel billets, steel plate, wire rods, etc

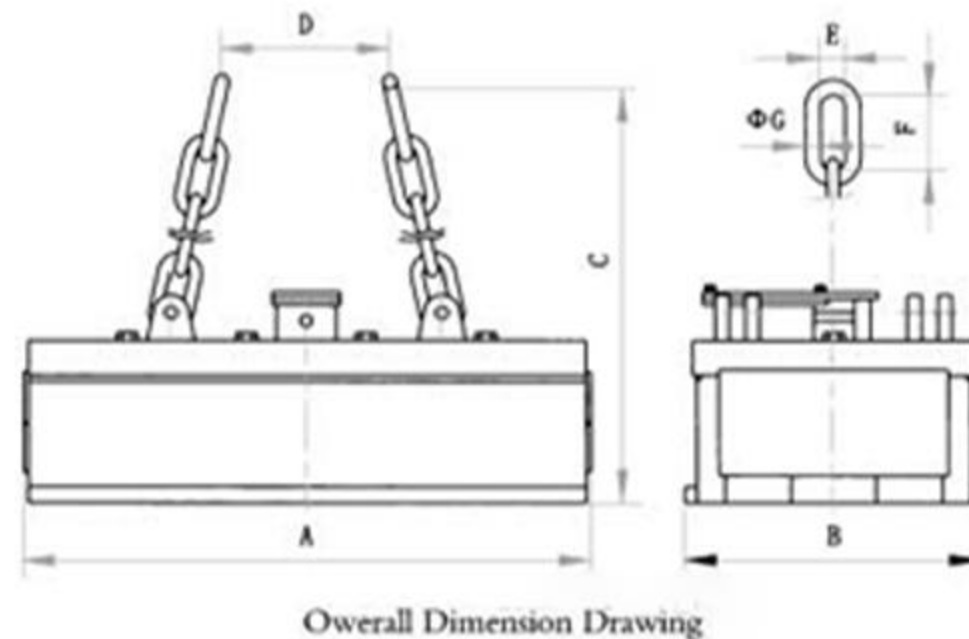


MW22 Lifting Electromagnet for Billet, Girder Billet and Slab

Used in different industrial areas, such as steel making, foundry, mining, machinery, transportation and other industries.

The most widely used series whose shape is rectangle especially suitable for lifting and transporting billet, steel ingot bloom, etc, and round profiled steel as well. Different magnetic circuits are designed for different steels.

Choose normal or high or super-high temperature type according to the material's temperature. If below 150°C choose normal type, between 150°C and 600°C high type, above 600°C but with a limit under 700°C, super-high type.



Series MW22 normal temperature type

◆ Basic Parameter:

Rated voltage DC-220, duty cycle TD-60%
Cold-state Power: 4.85kw~13.1kw
Cold-state current: 22.0A~59.2A
Mass: 1420kg~5680kg
Overall dimension: customize
Lifting capacity: on demand

Series MW22 high temperature type

◆ Basic Parameter:

Rated voltage DC-220, duty cycle TD-60%
Cold-state Power: 4.7kw~12.3kw
Cold-state current: 22.0A~55.9A
Mass: 1380kg~5790kg
Overall dimension: customize
Lifting capacity: on demand

Series MW22 super high temperature type

◆ Basic Parameter:

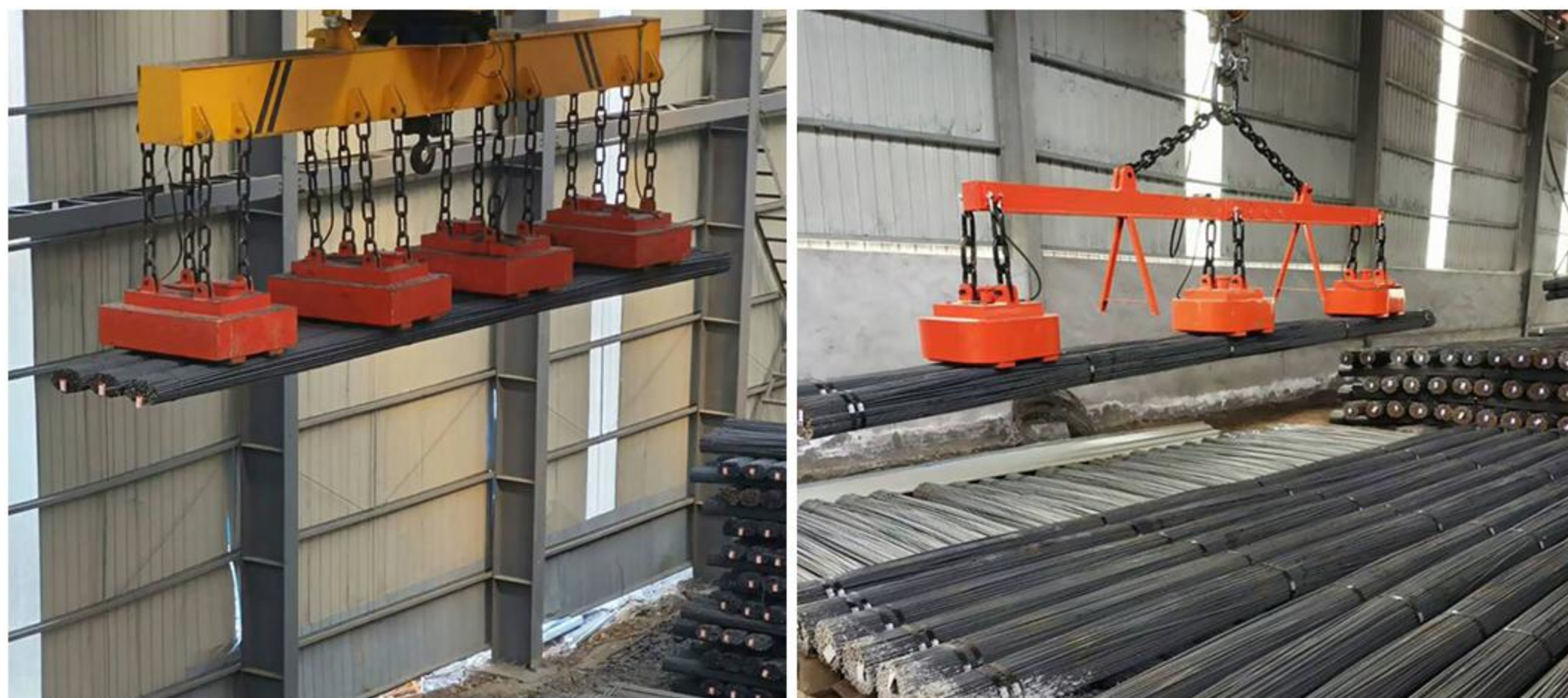
Rated voltage DC-220, duty cycle TD-60%
Cold-state Power: 5.3kw~15.1kw
Cold-state current: 24.1A~68.6A
Mass: 1520kg~6270kg
Overall dimension: customize
Lifting capacity: on demand



MW38 Lifting Electromagnet for Bundled Rebar and Profled Steel

Used in different industrial areas, such as steel making, foundry, mining, machinery, transportation and other industries.

This MW38 which adopts unique magnetic circuit has good advantages in heat dispersion, penetration, (for example it can penetrate air gap through multiple layers) and can lift and transport bar material, flat iron and angle iron in unpacked or simple packed situation. It improves problem like big deflection when lift round steel and thread steel. There are two kinds: normal & high temperature type. Normally multiple units are used in operation, so two or four connection points are used for linking hanging beam.



Series MW38 normal temperature type

◆ Basic Parameter:

Rated voltage DC-220, duty cycle TD-60%
Cold-state Power: 6.2kw~9.7kw
Cold-state current: 28.2A~44.1A
Mass:1520kg~3710kg
Overall dimension: customize
Lifting capacity: on demand

Series MW38 high temperature type

◆ Basic Parameter:

Rated voltage DC-220, duty cycle TD-60%
Cold-state Power: 6.5kw~10.3kw
Cold-state current: 29.5A~46.8A
Mass:1560kg~3800kg
Overall dimension: customize
Lifting capacity: on demand

Series MW38 over-high temperature type

◆ Basic Parameter:

Rated voltage DC-220, duty cycle TD-60%
Cold-state Power: 6.9kw~10.8kw
Cold-state current: 31.4A~49.1A
Mass:1630kg~3980kg
Overall dimension: customize
Lifting capacity: on demand



Lifting Magnet for Speed Wier(Coiled Bar)

This series owing to light self-weight reasonable structure (just contact with two points of the bar).Its magnetic pole is suitable for coiled bar which is different diameter.The length of coiled bar is important in choosing the right electromagnet It can be put into operation along length or width direction of electromagnet and multiple units can be used together or separately as well.

Choose normal or high or super-high temperature type according to the material's temperature. If below 150°C choose normal type,between 150°C and 600°C high type, above 600°C but with a limit under 700°C,supe-high type .

Series MW19 normal temperature type

◆ Basic Parameter:

Rated voltage DC-220, duty cycle TD-60%

Cold-state Power: 8.6kw~41.2kw

Cold-state current: 39.1A~187.3A

Mass:1760kg~8400kg

Overall dimension: customize

Lifting capacity:

outer diameter of coiled bar:Φ1250~Φ1350mm

weight of coiled bar: 900~1200kg/m

The length of coiled bar to be lifted shall be matched with that of electromagnet



Series MW19 high temperature type

◆ Basic Parameter:

Rated voltage DC-220, duty cycle TD-60%

Cold-state Power: 7.8kw~39.3kw

Cold-state current: 35.5A~178.6A

Mass:1830kg~8650kg

Overall dimension: customizable

Lifting capacity:

outer diameter of coiled bar:Φ1250~Φ1350mm

weight of coiled bar: 900~1200kg/m

The length of coiled bar to be lifted shall be matched with that of electromagnet



Lifting Electromagnet For Lifting and Transporting Steel

Used in different industrial areas, such as steel making, foundry, mining, machinery, transportation and other industries.

This series is specially designed for lifting and transporting medium-thick steel plate. The whole operation is safe, exact and quick, When transport some long plates they easily go distortion so we advise combination of multiple units to be used. For some plate which thickness is around the range of 6mm~32mm, space between 2 magnets should leave an extra 2.5~35m, the length at each end is that of one half of space. According to different lifting pieces, the series is divided into type 350 and type 400 and type 500 and type 650. Type 350 is suitable for medium-thick plate factory, ship building factory, machinery manufacturing factory it is controlled by adjustable magnetic field. And can lift one or certain pieces of plates Type 400 is suitable for lifting as many as possible pieces at a time; we can also produce the product less than 700°C (high temperature type) for you.

◆ Basic Parameter:

Rated voltage: DC-220V

Duty Cycle: TD-60%

Model: MW84

Matching Equipment: Overhead crane, gantry crane, excavator, etc

Handling Material: Metal scraps, steel billets, steel plate, wire rods, etc

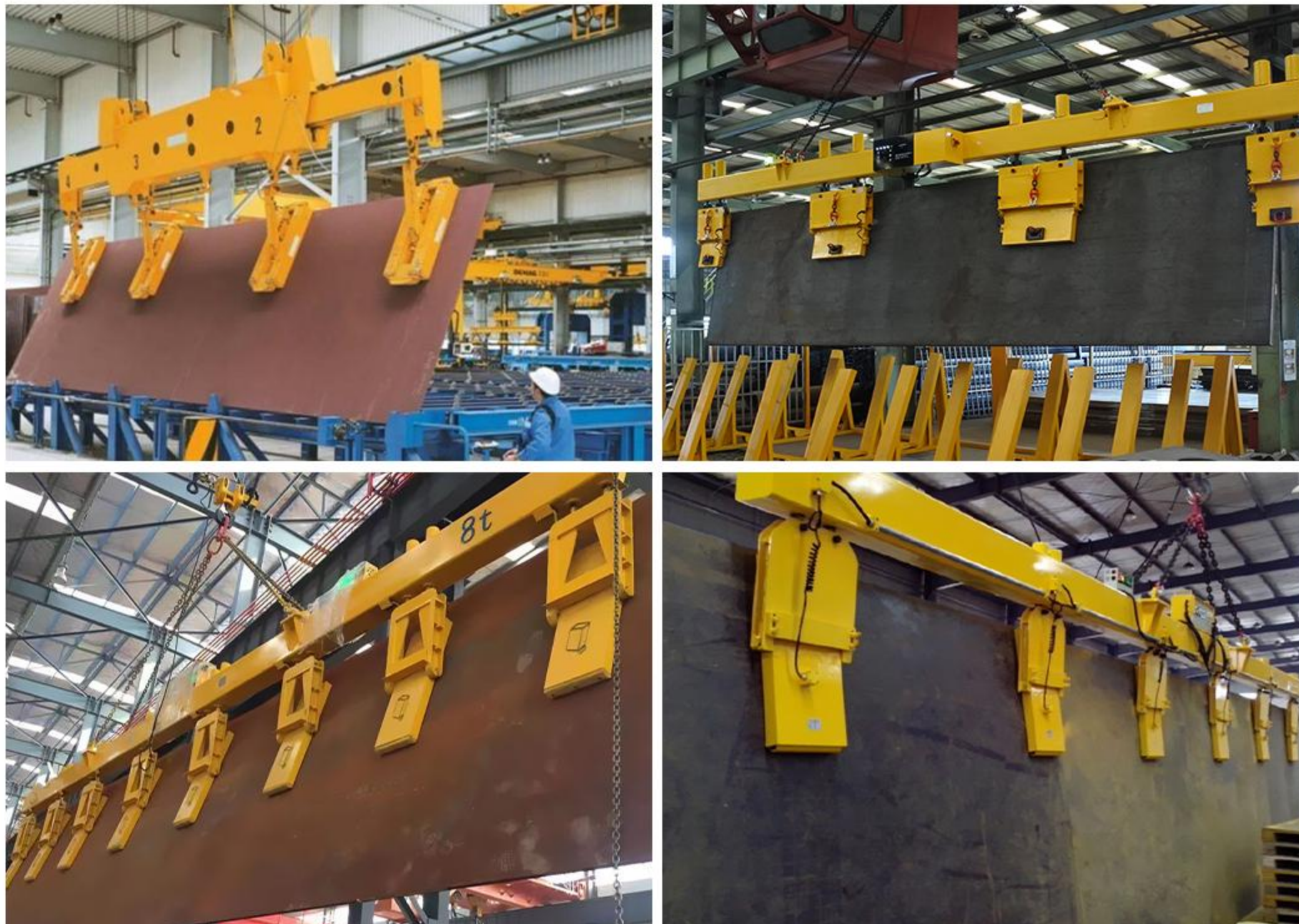


Lifting Electronmagnet for Turning and Side Hung

The product is suitable for turning slab caster for the purpose of checking & surface finishing its up and down surface and for lifting and transporting thick plate and tube caster as well, it can turn slab caster around 180° degree when being lift by the crane equipped.

The product is suitable for turning slab caster for the purpose of checking & surface finishing its up and down surface and for lifting and transporting thick plate and tube caster as well, it can turn slab caster around 180° degree when being lift by the crane equipped with guide column.

Main technical data for high temperature type
below 700°C, rated voltage DC-220V, duty cycle TD-60%



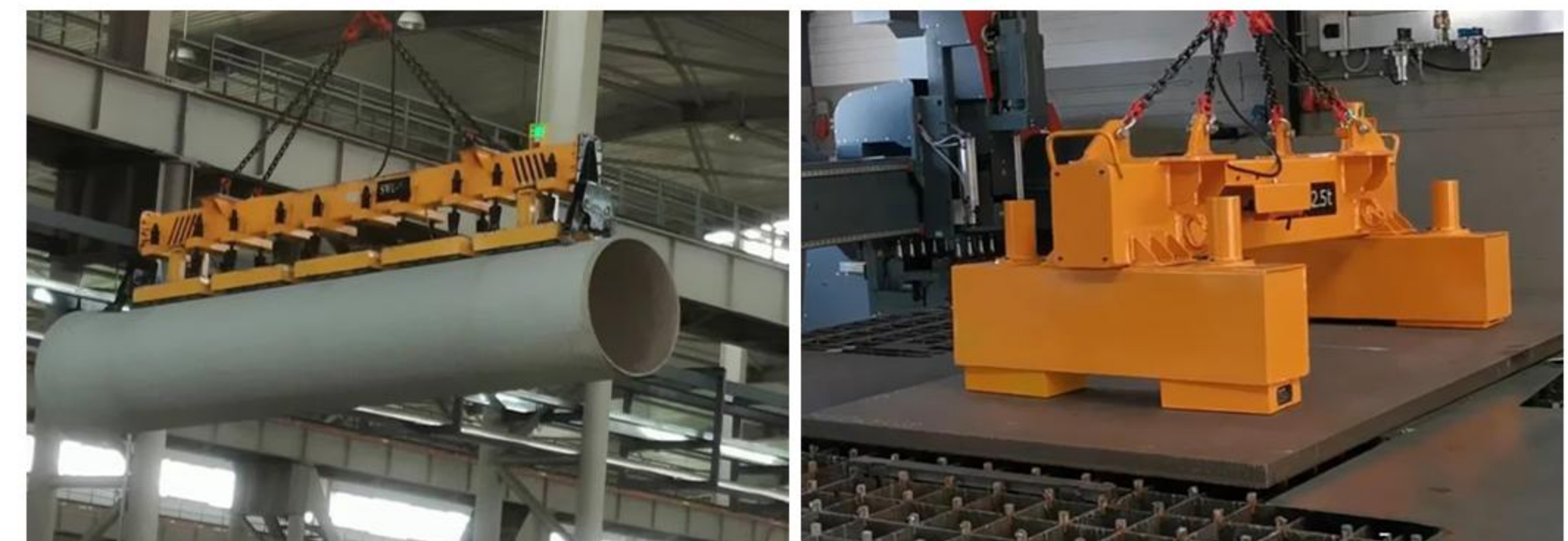
Electric Permangnet Lifter

- 1, the electric permanent magnet body is made of high strength magnetic NdFeb and copper wire coil fully sealed, impact resistant, maintenance-free, long service life.
- 2, the demagnetization process only takes 3 seconds to achieve demagnetization, so when in use, it will not drop the sucked steel plate due to power failure, resulting in safety problems.
- 3, the internal control system of the charging machine is controlled by a closed electronic circuit, the magnetization and demagnetization instantaneous circuit has no mechanical structure, no moving parts inside, and the electronic control system is stable and reliable.
- 4, the rechargeable spreader has a built-in magnetic adjustment system, which can adjust the magnetic force according to the thickness of the steel plate, and also control the number and weight of the lifting steel plate.
- 5, he can also increase the remote control to enhance the operability of the spreader and save manpower.
- 6, he can be single lifting and multiple lifting, to achieve different working conditions.

◆ Basic Parameter:

Suitable temperature: not higher than 80°C
Working current: 12A
Insulation class: H class
Rated suction: 1.0T
Working air gap pull down force: 1.5T
Suction safety factor: greater than 3.5
Weight: About 65kg

Working voltage: DC160V
Instantaneous power: 1.92KW
Protection level: IP56
Design working gap: 1.5mm
Maximum pulling force: 4.66T
Dimensions: 320*250*86mm



Hydraulic Magnet Lift

YMW series hydraulic magnet is a powerful lifting tool specially developed for garbage sorting industry, blasting demolition industry, scrap metal treatment industry and other industries. It can easily remove or separate steel from garbage, concrete, and wood at demolition sites iron material.

This type hydraulic magnet is a special tool that integrates excitation coil and hydraulic electromagnetic generator with full automatic control. It is directly operated by the driver of the excavator or crane. The driver operates the ordinary hydraulic system to control the hydraulic magnet. When the oil circuit is turned on, the hydraulic magnet produces a strong magnetic force to attract the steel. The oil circuit is closed to release the sucked steel and automatic demagnetizing.

◆ **Basic Parameter:**

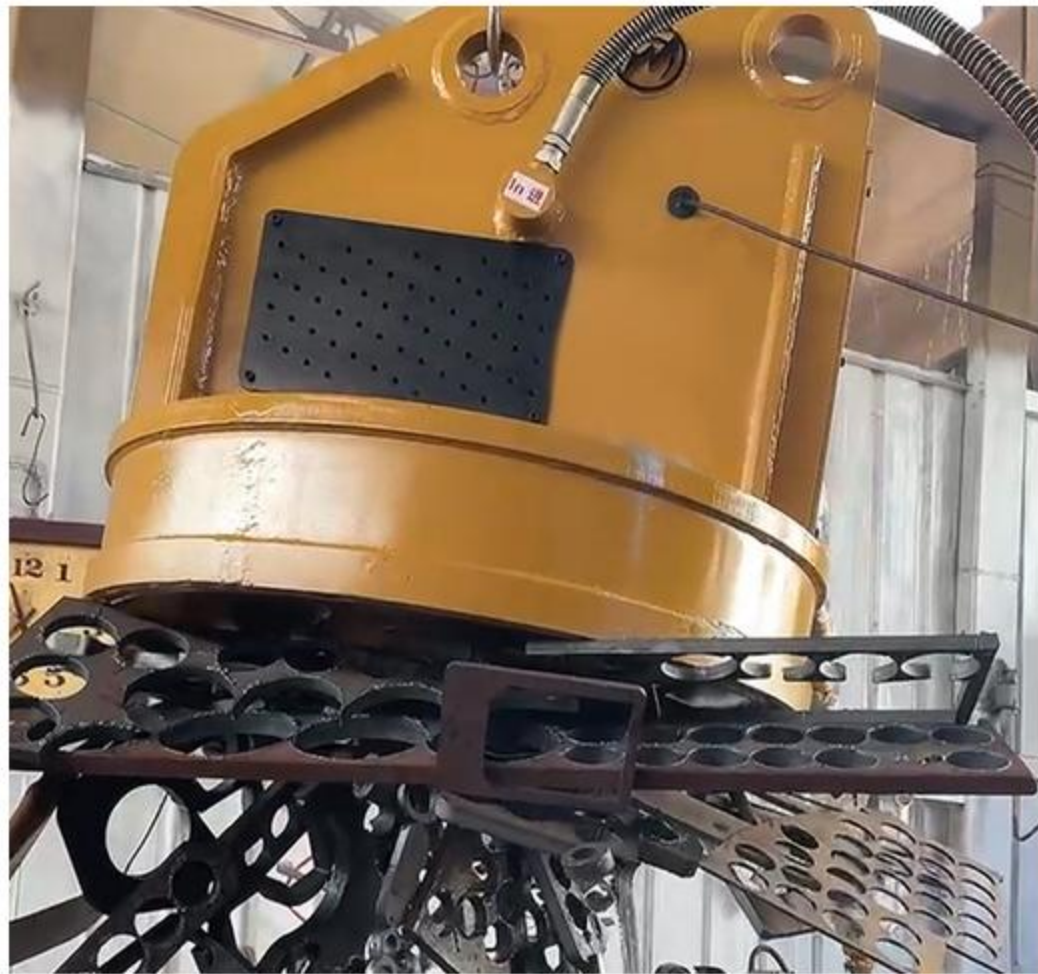
- Model: YMW5-100L/1, YMW5-110L/1, YMW5-120L/1, YMW5-130L/1
- Magnetic coil: Aluminum
- Coil power: 6.5~13.2kw
- Nomrally complete set includes magnet, electric cabinet, oil tubes, foot switch.



Application



Demolition site



Scrap industry



Garbage dump



Steel mill

ELECTRIC HOIST

Chain Hoist



Fixed Electric Chain Hoist



Trolley Type Electric Chain Hoist



Low Clearance Type Electric Chain Hoist

◆ Basic Parameter:

Lifting weight: 0.5T-16T
Hoisting high: 6m-30m
Hoisting speed: 1.8~8.8m/min
Travel speed: 11/21m/min
Power source: 380V 50hz 3P
or customized

Three types normally to meeting different usage demands, fixed type, electric trolley type, low clearance type.

Electric chain hoist adopts strength aluminum alloy body, beautiful appearance, compact body, small volume and light weight; it adopts two-stage gear transmission, and high-speed level is helical gear transmission; therefore, the transmission is stable, the noise is small, and the strength of parts is high; its main parts are made of alloy steel and processed by many special heat treatment processes, with high strength and good wear resistance.

Wire Rope Electric Hoist

◆ Basic Parameter:

Product Type : CD MD
Lifting Capacity: 0.5T-32t
Lifting Height: 6m-50m
Lifting Speed: 8 m/ min
Working Class: M3,M4
Ambient Temperature: -25-40℃
Power supply: 380V 50hz 3P
or customized



CD, MD Type Electric Wire Rope Hoist 1. Model CD, MD wire rope electric hoist is a small size lifting equipment, which can be mounted on the single beam crane, Double Girder, gantry crane and arm cranes. 2. Model CD electric hoist has only one normal speed, which can satisfy normal application. 3. Model MD electric hoist provide two speeds: normal speed and low speed. At a low speed, it can do precise loading and unloading, mounding of sand box, maintenance of machine tools, etc. 4. It is widely used in factory, mines, harbour, warehouse, cargo storage areas and shops, essential in raising working efficiency and improving working conditions.

HB Type Explosion Proof Electric Hoist

Explosion-proof single beam bridge cranes are widely used in lifting places such as factories, warehouses, and material warehouses. Most of them are used in flammable, explosive, and corrosive environments. For each of the Explosion proof sign is Exd II BT4、 Exd II CT4、 DIPA21TA, T4 and Exd I Mb.Work environment temperature -20~40°C.



◆ Basic Parameter:

Lifting weight: 0.25T-20T
 Hoisting high: 6m-30m
 Hoisting speed: 8/0.8, 7/0.7, 3.5/0.35 m/min
 Travel speed: 20 m/min
 Working class: M3
 Power supply: 380V 50Hz 3 or customized



Metallurgical Electric Hoist

Metallurgical electric hoist mainly used for lifting molten metal. Work environment temperature -20~60°C,It is often used in high-temperature working environment such as smelter. With double brakes, double limits, thermal baffle felt etc.many kinds of protection functions.



◆ Basic Parameter:

Lifting weight: 0.2T-10T
 Hoisting high: 9m-20m
 Hoisting speed: 8/2, 7/1.75 m/min
 Travel speed: 20 m/min
 Power supply: 380V 50hz 3P or customized



European Wire Rope Electric Hoist

◆ Basic Parameter:

Lifting weight: 0.5T-16T
 Hoisting high: 6m-30m
 Hoisting speed: 8/0.8, 3.5/0.35 m/min
 Travel speed: 20 m/min
 Working class: M4-M5
 Power source: 380V 50hz 3P or customized

It employs motor of hoisting mechanism and reducer imported from Germany. The integrated and compact design of hoisting motor, reducer, reel and limit switch saves space for the user. Modular design increases the reliability of mechanism meanwhile reduces the time and cost for maintaining.

It has more and faster hoist speed and various pulley ratio which can be selected. The standard traveling mechanism of trolley is controlled by converter, with speed of 20m/min, which makes a little swing and accurate position if hoisting items while trolley traveling as well as lifts precision and valuable items reliably.



ELECTRIC GRAB Hydraulic Muti-flap Grab

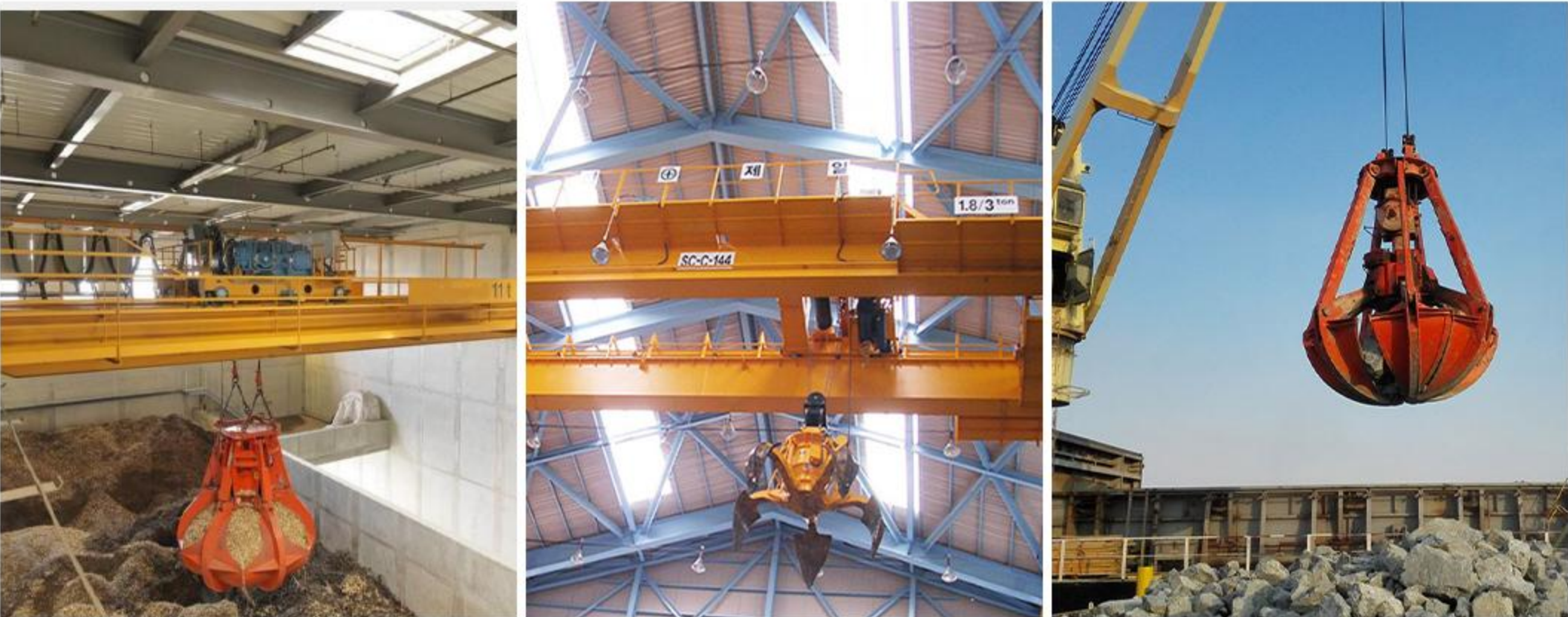
◆ Basic Parameter:

Volume: 0.5m³~20m³
 Self weight: 1.5T~11T
 Motor power: 11kw~45kw
 Operating pressure: 180, 200 bar
 Close time: 10s~28s



This series grab is suitable for loading and unloading of scrap iron and steel bulk materials and garbage in various harsh environments, and is widely used in port, railway, metallurgy, mining, construction and other industries.

The grab jaw flap can be closed according to the shape and size of the material, which is conducive to the grabbing of large materials. The number of jaw flap can be designed according to the characteristics of grabbing materials and the needs of users.



Four Rope Flap Grab

◆ Basic Parameter:

Type: Light, Middle, heavy, super heavy.

Volume: 0.5~10m³

The rate of pulley: 3, 4, 5, 6

The diameter of steel rope: 14~32mm



The four-rope grab is mainly used with bridge or gantry cranes with two sets of lifting drums to grab all kinds of loose deposits, and perform operations such as loading, unloading, and transferring materials. Mainly supporting double girder bridge crane or double main girder gantry crane.

According to the type of material and user requirements can be designed with teeth, parallel beam opening, underwater operation and other forms. Because the size of the bucket part of the grab is different, the capacity of the material captured is different, we usually divide the grab into four grades: light, medium, heavy and super heavy.



Single Rope Hanging Grab

◆ Basic Parameter:

Model: U, AS, X, XZ, XC

Type: light, middle, heavy, super heavy

Volume: 0.3~8m³

Crane capacity: 1~20 ton



The single rope grab is applicable to all kinds of cranes with only one lifting drum (single hook).

Its opening and closing mechanism is novel, it can be opened and closed freely during loading and unloading, and the whole machine is easy to use, remove and hang. It is suitable for underwater and land operation for grasping and stacking.



ELECTRIC TRANSFER CART

Electric Transfer Cart

Transfer carts, also known as cross flat cart, transfer trolley, electric flat cart, have advantages as simple structure, easy operation and maintenance, large load capacity and so on, with which these transfer carts are widely used in machine manufacturing and metallurgical factory matching up with lift cranes to transport heavy objects warehouse across. The rail transfer carts are suitable for various industries, steel mill and factory, paper roll plant, painting room, shipbuilding, new factory building project, machine processing line, heavy industry, airport and so on to transfer or handling material and equipment from one place to another, from warehouse to workshop.

◆ Basic Parameter:

Length: 2000-10000mm

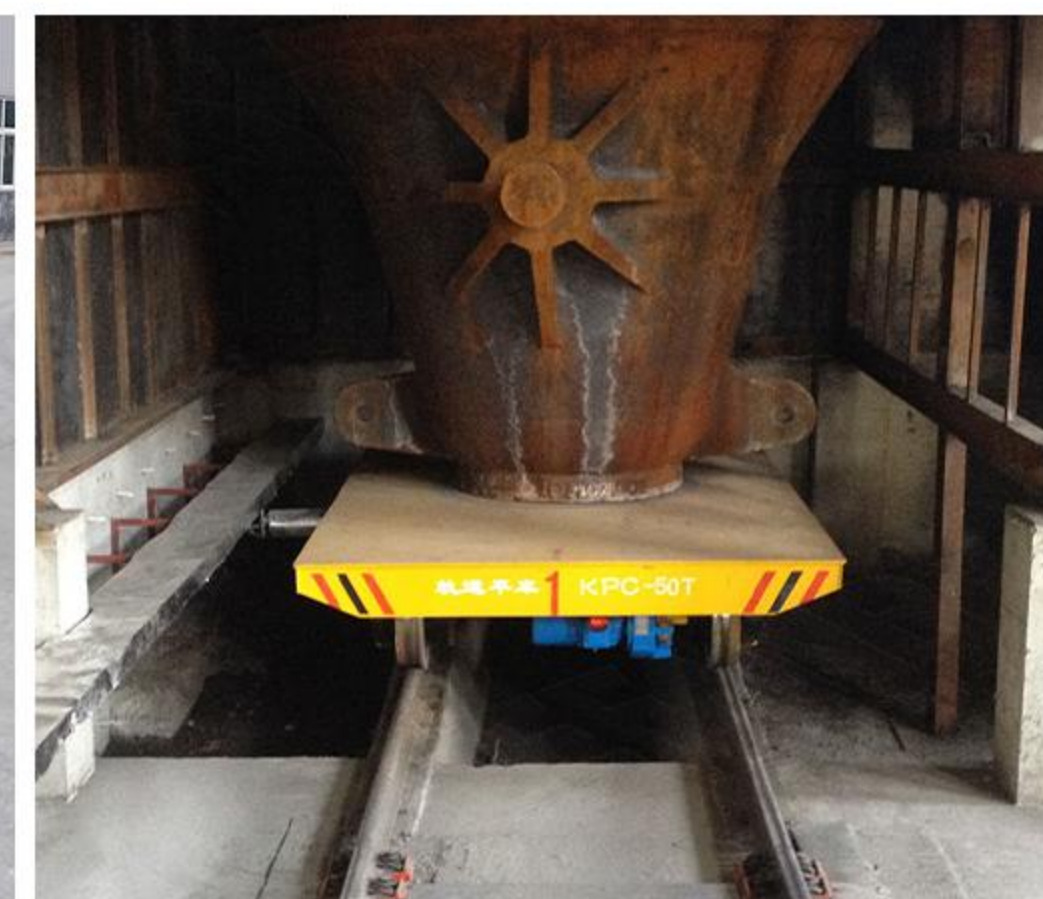
Height: 450-1200mm

Width: 1500-3000mm

Wheel Diameter: $\Phi 270$ - $\Phi 600$

Advantages:

- 1.Simple design and compact structure, reliable and large carrying safety factor.
- 2.Quality steel has sufficient stiffness
- 3.The surface is sandblasted to meet the requirements of environmental regulations
- 4.With emergency stop function, reasonable arrangement of emergency stop button
- 5.Equipped with overload limiter and limit protection device



JK Electrically Controlled High-speed Winch

Description

Winch, also known as winch, is a light and small lifting equipment that uses a drum to wind a steel wire rope or chain to lift or tow heavy objects. Winches can lift, level, or tilt heavy objects vertically. Winches are divided into three types: manual hoists, electric hoists, and hydraulic hoists. Currently, electric winches are mainly used. It can be used alone or as a component of machinery such as lifting, road construction, and mine hoisting. It is widely used due to its simple operation, large amount of rope winding, and convenient relocation. Mainly used for material lifting or towing in construction, water conservancy engineering, forestry, mines, docks, etc.

Features

This product has high versatility, compact structure, small size, light weight, heavy lifting capacity, and convenient use and transfer. It is widely used for material lifting or towing in construction, water conservancy engineering, forestry, mining, docks, and other fields. It can also be used as a supporting equipment for modern electronic control automatic operation lines.



JKD Electrically Controlled High-speed Winch

Description

This series of winches is mainly used for lifting, pulling, and loading and unloading heavy objects, such as the installation and movement of various large and medium-sized concrete, steel structures, and mechanical equipment. It is suitable for civil engineering and bridge construction in construction and installation companies, factories and mines. Especially suitable for the lifting and reuse of the main winch of the supporting crane.

Operational principle

It is a method of using external forces (such as electric motors) to drive it to operate, and then controlling it to not operate freely without power through electromagnetic brakes and lock up brakes. At the same time, after being driven by electric motors to reduce speed, it drives a wheel disc to operate, Steel cables or other things can be rolled on the wheel.

Features

This product has high versatility, compact structure, small size, light weight, heavy lifting capacity, and convenient use and transfer. It is widely used for material lifting or towing in construction, water conservancy engineering, forestry, mining, docks, and other fields. It can also be used as a supporting equipment for modern electronic control automatic operation lines.



JM Series Electric Controlled Slow Speed Winch

Description

JM Electric Winch, also known as winch, is a light and small lifting equipment that uses a drum to wind a steel wire rope or chain to lift or tow heavy objects. Winches can lift, level, or tilt heavy objects vertically. Winches are divided into three types: manual hoists, electric hoists, and hydraulic hoists. Currently, electric winches are mainly used. It can be used alone or as a component of machinery such as lifting, road construction, and mine hoisting. It is widely used due to its simple operation, large amount of rope winding, and convenient relocation.

Features

This product has high versatility, compact structure, small size, light weight, heavy lifting capacity, and convenient use and transfer. It is widely used for material lifting or towing in construction, water conservancy engineering, forestry, mining, docks, and other fields. It can also be used as a supporting equipment for modern electronic control automatic operation lines.



QPQ Hoist

Description

The Hoist type hoist is mainly suitable for the device used to open and close gates in water conservancy and hydropower engineering. Its main function is to close the discharge, inlet and outlet of tailwater, regulate power generation, discharge and float, and control the passage of ships. Most QPQ double suspension point winch hoists now use electric motors as the driving force, and small and medium-sized capacity specifications can be equipped with hand cranking devices, making it convenient for thousands of people to open and close the door at any time. During operation, the power of the electric motor drives the coil to rotate through the coupling, reducer, and open gear. The steel wire rope is retracted or released in the spiral groove, causing the door to open and close. The main controller can control the upper and lower limit fixed positions of the gate, and the brake can make the door stay at any desired position.

Features

- 1.The hoist consists of a motor, hoist, frame, protective cover, etc; Adopting a three-stage deceleration method and using a spiral pair transmission, the output torque is larger.
2. The supporting steel frame of the hoist overcomes the unevenness of the civil engineering to reduce the overall noise and vibration of the machine.
3. Adopting outdoor long-term working motors with a protection level of $\geq IP55$.
- 4.Easy to operate and maintain, capable of on-site and remote control operations.

